



Grandville del

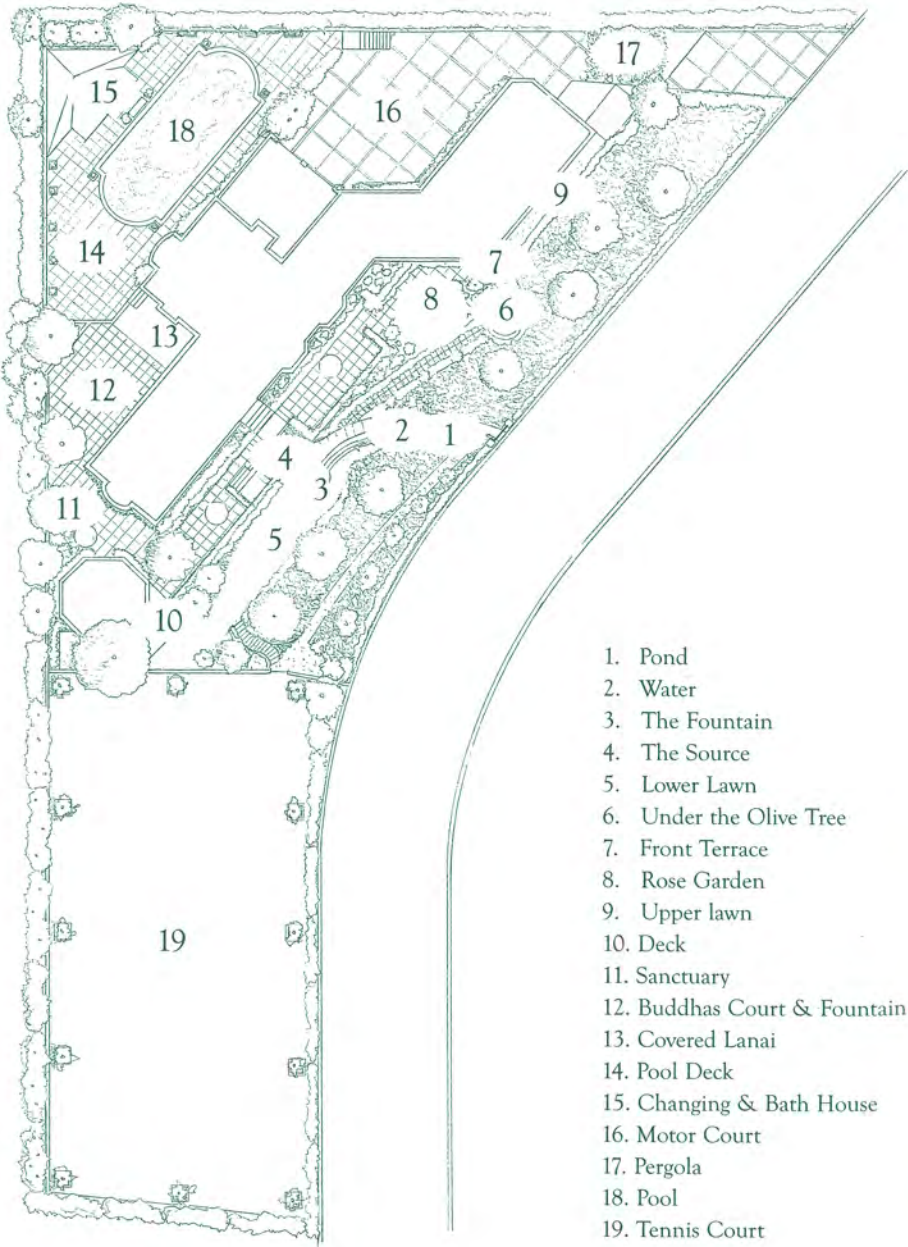
Sarazin imp.r. Git leCœur. 8, Paris

Ch. Geoffroy sc

TULIPE

Garnier frères Editeurs

“Something Old, Something New”



1. Pond
2. Water
3. The Fountain
4. The Source
5. Lower Lawn
6. Under the Olive Tree
7. Front Terrace
8. Rose Garden
9. Upper lawn
10. Deck
11. Sanctuary
12. Buddhas Court & Fountain
13. Covered Lanai
14. Pool Deck
15. Changing & Bath House
16. Motor Court
17. Pergola
18. Pool
19. Tennis Court

“Something Old, Something New”

LANDSCAPE DESIGN BY Michael Baer,
Green Tree Landscaping

Once the long-time residence of film icon Bette Davis, this historic property is now home to a family deeply involved in the cultural and commercial life of Beverly Hills. The home and its natural setting must serve a dual purpose: as a graceful stage for the homeowners' active public life and as a quiet sanctuary for their private life.

A design scheme has been employed to take full advantage of the changing seasonal sunlight. Due to the home's location, the light plays a dramatic role that changes from season to season. The planting choices reflect a sensitivity to issues of height, shadow, and texture, making the most of each season. The garden maintains a simple and orderly color palette: green and white as the fundamental notes of color to create calm, with judicious accents in annual flowers of blue, yellow and - very sparingly- red.

One of the primary effects of the landscape design is the creation of privacy without resorting to life behind walls. A simple, cascading rill beside the entry walkway introduces running water as an aural sound barrier to street traffic below. Here the planting design adds texture and movement with a combination of visually interesting trees (white-trunk birch, older gnarled olive) and swaying grasses. As a guest nears the front door of the home, the ambience shifts away from the natural informality of the water rill entry, and a more formal, structured area opens to view, featuring well-manicured boxwood hedges, espaliered Meyer lemon trees and an explosion of climbing Iceberg roses to soften the interface between the residence and its garden environment.

To address privacy in the rear gardens, the design more aggressively mixes formal Western and Eastern elements. First, an exuberant blend of several bamboo types - mixing size, color, and texture - serves to immediately and thoroughly screen the home from neighbors. Second, a complete reworking of the pool area with changes in depth and tile color - shifts this critical element of the hardscape into a more mysterious, natural harmony with the entire backyard scheme. Tying it all together, a combination of Asian garden elements inside what is still fundamentally a formal English-style environment, can leverage the best of both cultures to create calm order. It's the perfect blend of "Something Old and Something New."